

In recognition of their gift which  
will improve the quality of life in  
southeastern Indiana through the  
expansion of educational opportunities  
and economic development, the  
*Purdue Research Foundation*  
offers special thanks to  
**The Shine Family**  
*On this 1st day of October, 2008*

“The Purdue Research Park of  
Southeast Indiana is an important  
enterprise for New Albany and the  
surrounding areas. Collaborations  
with Purdue enhance economic  
development in our region.  
Their programs help educate our  
young people and enrich our  
community.”

John Shine  
President, Samtec Inc.

## Contact Us

Purdue Research Park of Southeast Indiana  
Purdue Technology Center  
3000 Technology Avenue, Suite N2210  
New Albany, IN 47150  
(812) 206-8290 (phone)  
(812) 206-8291 (fax)  
[www.purdueresearchpark.com/newalbany](http://www.purdueresearchpark.com/newalbany)

## Visit Us

The Purdue Research Park of Southeast Indiana is  
strategically located at the southeast corner of the I-265  
and Charlestown Road interchange in New Albany, IN.

From points north:

- Follow I-65 South to I-265 West (New Albany Exit 6B).
- Take the Charlestown Road exit (Exit 4).
- Turn left onto Charlestown Road
- Travel one-fourth of a mile on Charlestown Road to  
Innovation Blvd.
- Turn left onto Innovation Blvd.
- The center is located on the right at  
3000 Technology Avenue.

From points south:

- Follow I-65 North to I-265 West (New Albany Exit 6B).
- Take the Charlestown Road exit (Exit 4).
- Turn left onto Charlestown Road
- Travel one-fourth of a mile on Charlestown Road to  
Innovation Blvd.
- Turn left onto Innovation Blvd.
- The center is located on the right at  
3000 Technology Avenue.

**PURDUE**  
**RESEARCH PARK**

The idea economy is here®



Purdue Research Park  
Purdue Technology Center  
*Southeast Indiana*



# Purdue Research Park of Southeast Indiana

## Purdue Technology Center

Located in New Albany, Ind., just across the Ohio River from Louisville, Ky., the Purdue Research Park of Southeast Indiana was created to spur economic growth by cultivating new industries, particularly in life sciences and information technologies, for the southern part of the state.

Developed by the Purdue Research Foundation on prime land donated by the Shine family, the 44,000-square-foot facility serves to assist the growth of technology-based startups and expanding companies as well as to facilitate technology transfer between the academic and corporate sectors.

An entrepreneurial-infused environment keeps clients focused on business development while surrounding them with time- and money-savers, including flexible leases and specialty services. Purdue Foundry helps them connect with Purdue University researchers and expertise as well as other like-minded companies within the Purdue Research Park network.

The Purdue Research Park of Southeast Indiana's programming is backed by Purdue's main campus in West Lafayette and its locally based Purdue College of Technology at New Albany, which operates from the center's first floor. In addition, the center houses the Purdue Extension Office for Floyd County, and provides a regional office for the Purdue Department of Pharmacy Practice.



### Facility

*Our state-of-the-art facility provides high-tech advantages to give our companies a competitive edge:*

- Flexible space and leases as short as six months
- Well-appointed conference facilities with videoconferencing/presentation equipment
- Fiber optic network connectivity
- Data center with backup-generated power, industry-standard cooling and round-the-clock security monitoring
- Managed business center with quality equipment
- VoIP telecommunications system
- Secure facilities with key fob entry
- Specialized laboratory facilities

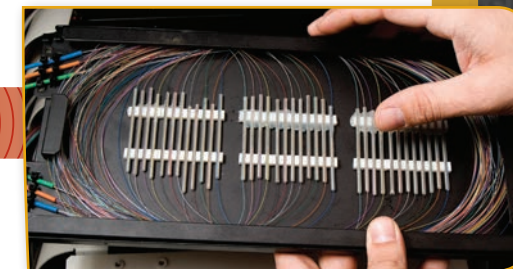


- Exterior and interior suite identification and signage
- Break room with microwave oven and refrigerator
- Plentiful free parking

### Services

*We offer our clients several business incubation services, which are especially helpful early in the entrepreneurial process:*

- Business accelerator services through Purdue Foundry
- Shared office services including professional receptionist/clerical support
- Meeting and conference management assistance
- Managed mail services
- Media relations and marketing assistance
- HR recruitment services
- Basic utilities and janitorial services
- IT support



### Resources

*We provide strategic networking opportunities that bring our clients together with important resources, many of which are not available to the general public. The resources are provided by:*

- Purdue Office of Technology Commercialization
- Purdue Foundry
- Anvil
- Purdue University Technical Assistance Program
- Purdue University faculty and staff for R&D collaboration
- Purdue University internship, co-op, senior project programs and part-time employment
- Purdue University library system
- Purdue Research Foundation DataStation
- Industry partners
- Community business and economic development partners



### Purdue Foundry

The Purdue Foundry is an entrepreneurship and commercialization hub in Discovery Park's Burton D. Morgan Center for Entrepreneurship whose professionals help Purdue or Purdue-affiliated entrepreneurs create startups. Entrepreneurial professionals in the Foundry have a combined total of 150 years of entrepreneurial experience. These entrepreneurs-in-residence can provide startup guidance on a number of startup and business development ventures, including:

1. Business planning development and assistance.
2. Funding and commercialization activity.
3. Networking and pitching opportunities.
4. Ideation to refine ideas and potential markets.

The Purdue Foundry received the 2014 Incubator Network of the Year from the National Business Incubation Association for its work in entrepreneurship. For more information, contact the Purdue Foundry at [foundry@prf.org](mailto:foundry@prf.org).

### Affiliate Program

The Purdue Research Park of Indianapolis Affiliate Program gives eligible companies access to the park's resources, facilities and specialty services. Many of our affiliate companies are waiting for available incubation space.

### Financial Assistance

The Purdue Research Park staff assists clients by helping them locate sources of funding and by preparing clients to make their "ask." We help match our client companies to the appropriate financial resources, including federal grants and R&D project funding (i.e., SBIR and STTR grants), state funding and other public programs, university and corporate foundations, equity sources and early-stage gap funds. Additionally, client companies may be listed with the P3Alliance ([www.P3Alliance.com](http://www.P3Alliance.com)) – Purdue's Angel investment network.